

# Programs



**G O O D F O O D <> program**

<b>food bank</b>	* lobby area, used for donations and client food pick-up. seating/waiting area for 10 people, counter access to warehouse, direct access to the street	300	<b>2100 sub</b>
	* food warehouse, adjacent to food bank lobby with access to the loading area	1800	
<b>shared amenities</b>	* ground floor covered bike parking for 20 bikes	200	<b>1100 sub</b>
	* secured covered seating area for 20-30 people, adjacent to the sidewalk and public street parking spaces, for use in conjunction with daily/nightly food trucks, food hall and other events related food consumption.	300	
	* secured entry lobby with information/security desk, public stair to upper levels, 2 passenger elevators providing access to all programmed areas.	600	
<b>shared services</b>	* secured loading dock, back-in. two bays at 12'x25' each, 14' clear height.	600	<b>1300 sub</b>
	* common garbage and recycling area, adjacent to loading dock	200	
	* freight elevator, 10'x10' cab adjacent to loading dock, providing access to all major spaces on the upper floors of the building	100	
	* building services, utility room, electrical vault, elevator machine rooms. preferred ground floor location with proximity to exterior and loading area	400	
<b>commerce</b>	* food hall, flexible ground floor space to be used for a variety of food related events including weekly farmers market, specialty food fairs, pop-up food events and other commercial activities. convenient access to loading area	4000	<b>6600 sub</b>
	* public restrooms, 2 fixtures each, accessible to food hall	400	
	* commissary kitchens, available for rent by food truck vendors, caterers, small scale manufacturers and other food related entrepreneurs. reasonable access to loading area and/or freight elevator. [8] kitchens @ 12'x10', [4] kitchens @ 20'x15'	2200	
<b>shared public space</b>	* auditorium, 80'x60'. 15' flat entry area at rear, 18' accessible stage area at front, stepped seating platforms at 6" rise/42" run. side gallery for accessible seating and general viewing, AV support area, controllable natural light, minimum height of the auditorim at the rear to be 12' clear. must have two means of egress, only one of which can use any adjacent common space and/or public stair.	4800	<b>7800 sub</b>
	* gallery/reception/exhibition space, well served by direct and convenient public access and visibility. proportioned to allow for flexible use, controllable natural light.	2000	
	* outdoor terrace, direct access to gallery/reception/exhibition	400	
	* furniture and equipment storage, for combined use with auditorium and gallery	200	
	* public restrooms, 2 fixtures each, convenient access to auditorium and gallery	400	
<b>education</b>	* workspace for local 'good food' organizations involved in public education and awareness related to food issues, including urban farming, slow food, food justice and sustainable food practices. shared meeting and organizing area @ 400 sf, connected to an open/divisible office area @ 1200 sf.	1200	<b>5800 sub</b>
	* classrooms, 2 @ 400 sf each with reasonable access to the teaching garden	800	
	* teaching and research garden, variable soil bed depth from 6"-24", reasonable access/proximity to research institute and classrooms	3000	
	* garden support, equipment, tools and storage. adjacent to garden	400	
	* public restrooms, 2 fixtures each, convenient access to eductaion spaces	400	
<b>research</b>	* non-profit research institute focussed on the intersection of technology and urban food production. flexible use space with reasonable access to research garden	2000	<b>2800 sub</b>
	* greenhouse and hydroponics lab, adjacent to research institute	800	
	* circulation at maximum of 15% of net program area		<b>4100 sub</b>
			<b>31600 net</b>

**Total Area:** 6170 usf  
**Total Seats:** 77 seats

Space Type	Qty	# of Seats	Area	Use
Reception	1	2	200	Greeting guests
Kitchen	1	6-8	1000	for gathering, eating, socializing
Gallery	1		400	for display of art
Workshop Space	1	-	400	for meetings, workshops
Group work zone	1	36	1512	for collaborative work
Focused work zone	1	12	504	for computer work, editing
Library	1	10	400	for reference materials, inspiration
Casual Meeting Space	5	4	723	for reading, sketching, play
Cozy Huddle Space	4	4-6	463	for small private meetings
Phone corners	4	1 each	320	for private conversations
Lockers	60	-	120	to place personal belongings
Restrooms	2	-	400	(W: 2 WC; M: 2 urinals, 1 WC)
Print/Copy Area	1		72	
Community Area/Bulletin Board	1	-	100	to display what's going on at the airport
Coat closet	1	-	60	
Storage	1	-	150	
<b>TOTAL AREA</b>			<b>6824</b>	

# Space Types

Reception



Kitchen





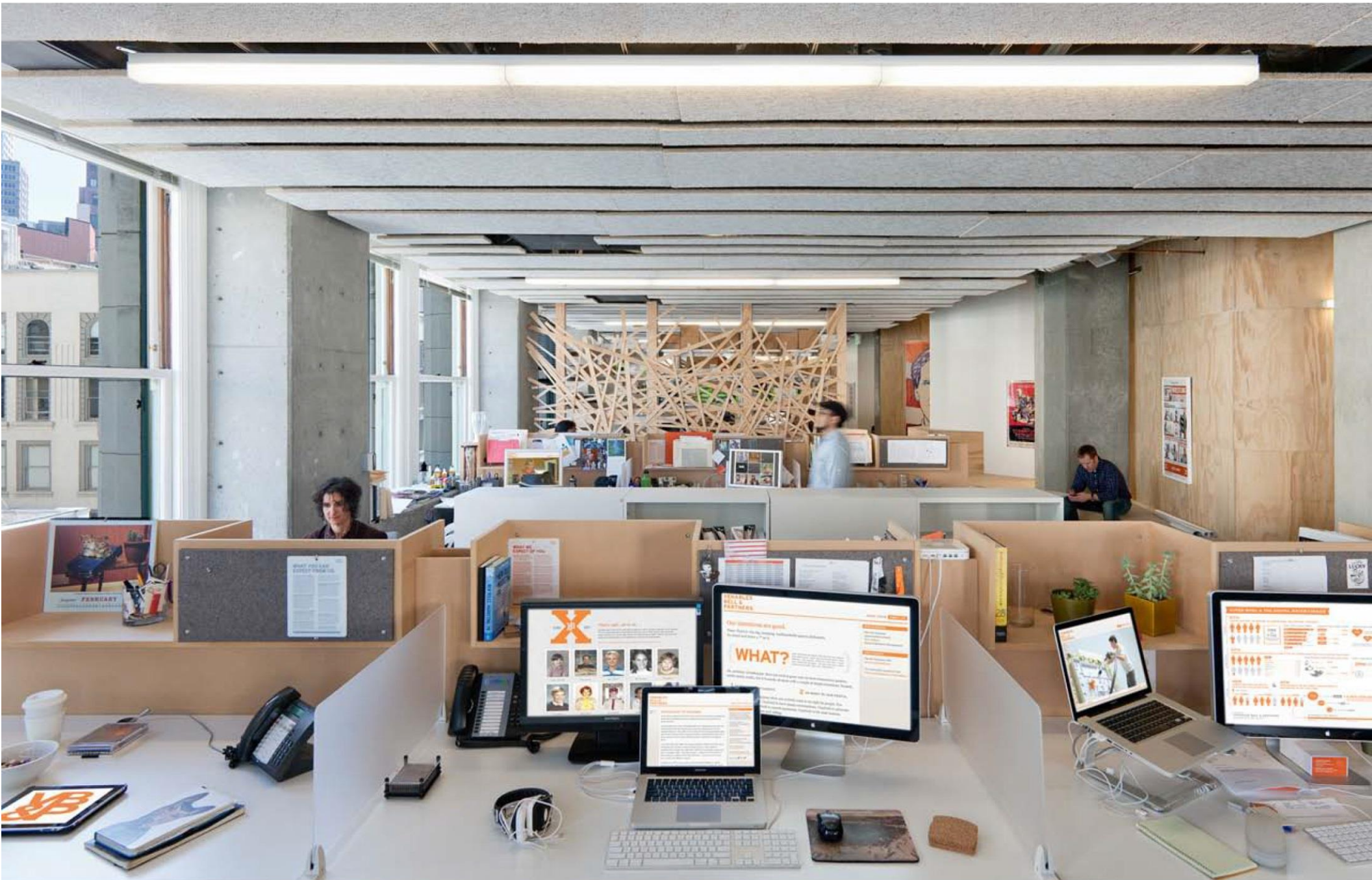
Gallery



# Workshop Space



Work zones



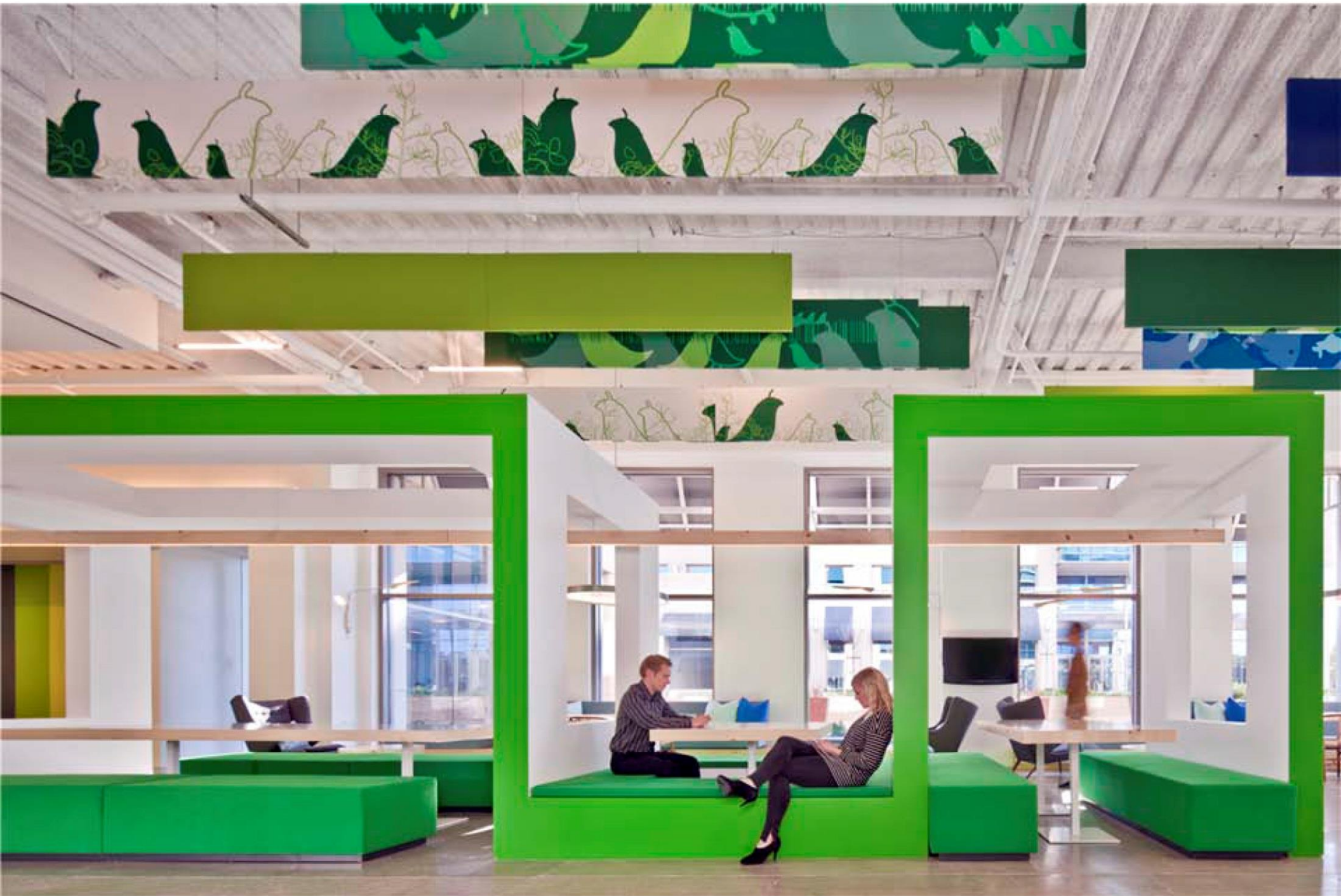


Library





# Casual Meeting Space







Cozy Huddle Space



# Phone Corners







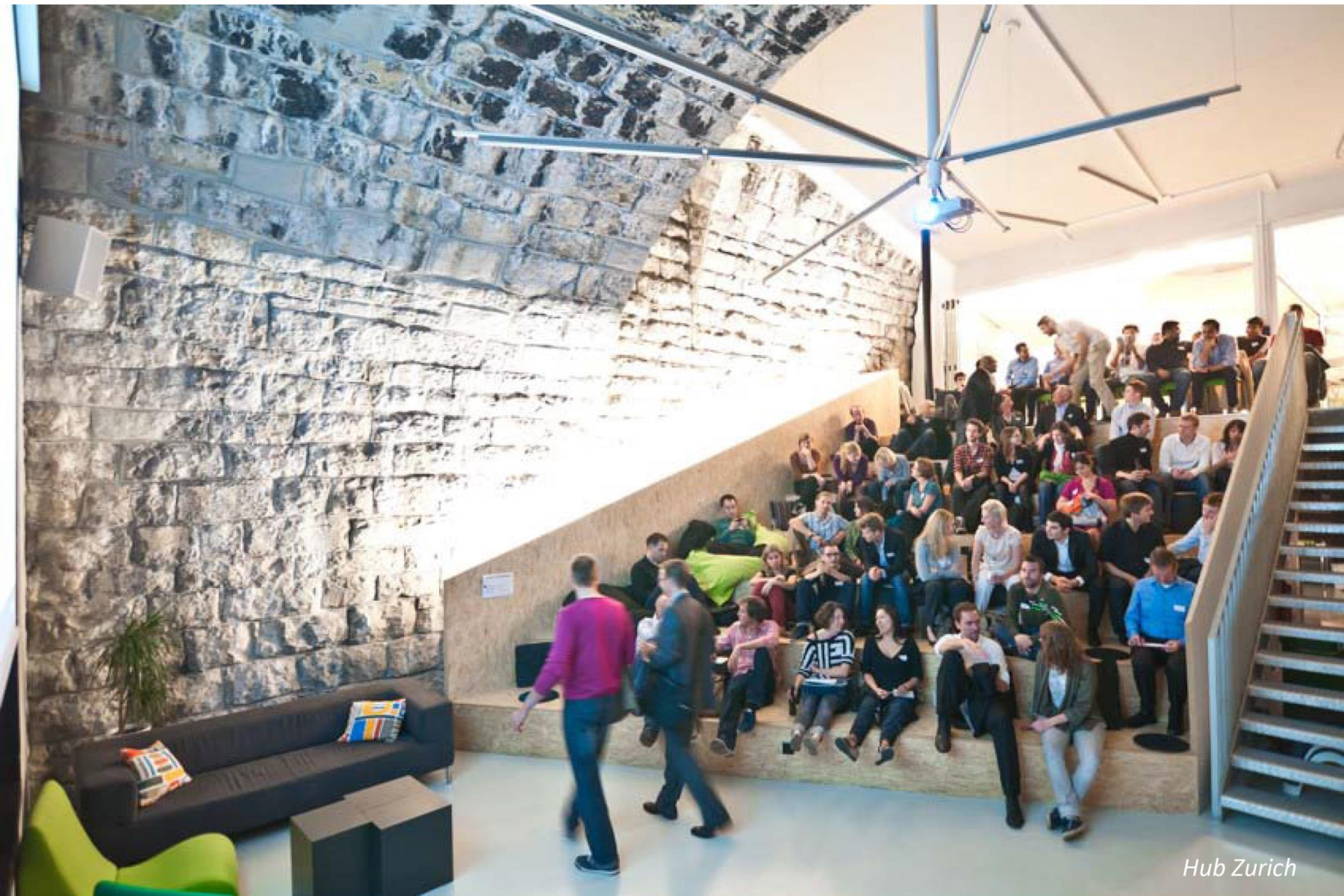
Community Area



# Co-Working Spaces



*formerly Summit, San Francisco*

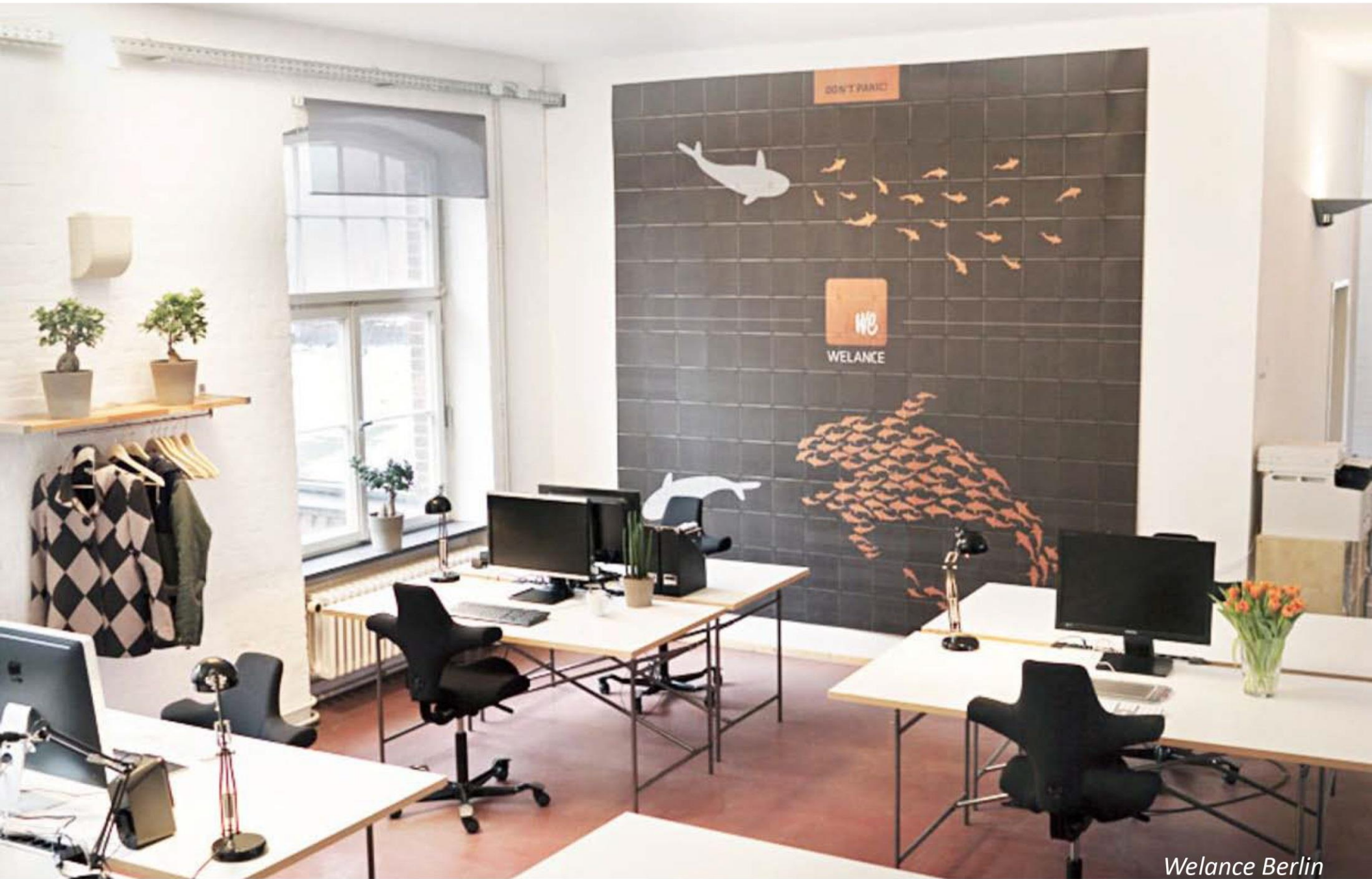








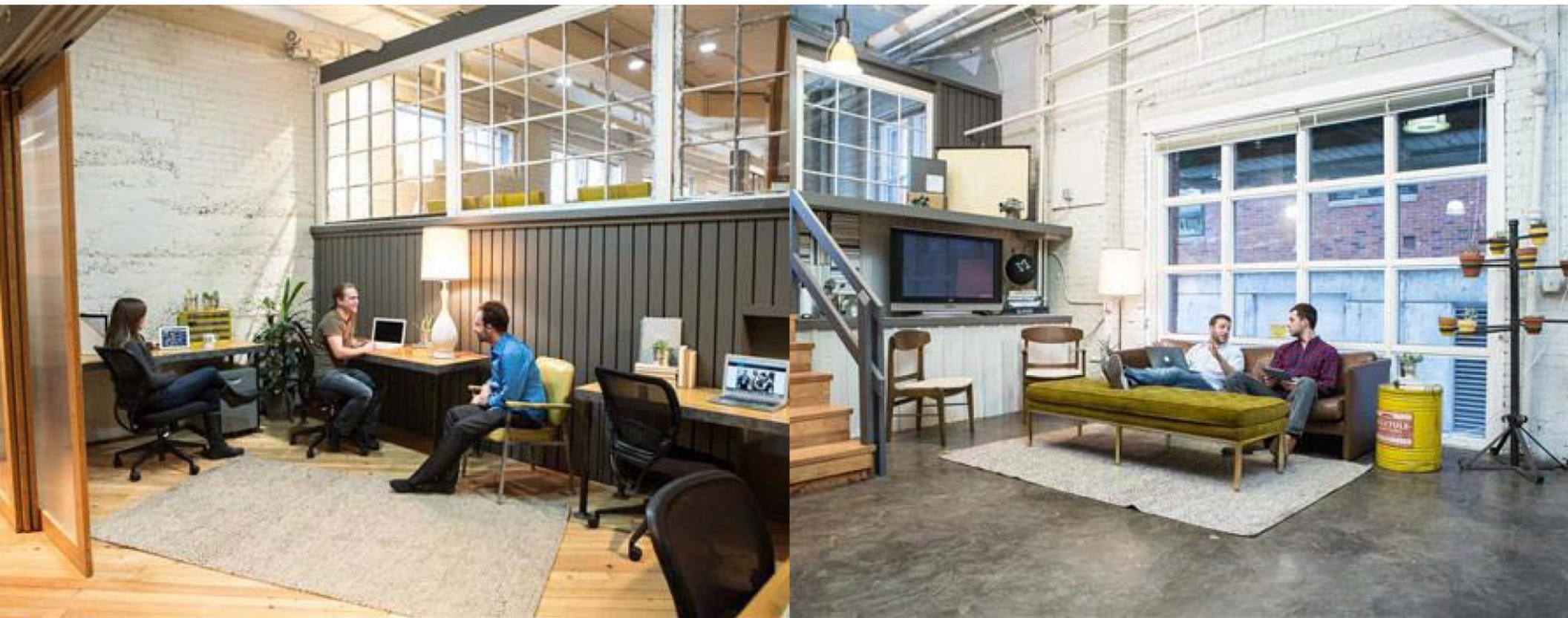
*Quill New York*







*Maker Space Seattle*





*Maker Space Seattle*



*Maker Space Seattle*



*Brooklyn Yard*



concept > restaurant > kitchen > table : program

total area: **6170** sq. ft.

total seats: **77**

space type	qty.	no. of seats	area	purpose
reception	1	5	200	check in/out, create an account
coat closet	1	--	60	maintained by reception
storage/lockers	1	--	210	rentable
gallery	1	--	400	display members artwork
kitchen & casual				
meeting space	1	10 - 12	1,723	gathering & meeting, eating
workshop space	1	--	400	scheduled workshops
group work space	1	36	1,512	for collaborative work & networking
library	1	10	400	reference material re: workshops, members
focused work space				
focused work space	1	12	504	individual work/private space...shh!
cozy work space	4	4 - 6	463	small private meetings
phone nooks	4	1/nook	320	private conversations
restrooms				
restrooms	2	--	400	w: 2 w/c, m: 1 w/c, 2 urinals
community bulletin	1	--	100	maintained by reception
print/copy area	1	--	72	

# PROGRAM

TOTAL AREA			6170 USF		
SPACE TYPE	QUANTITY	NUMBER OF SEATS	AREA	INITIAL AREA	USE
Reception + Retail Goods	1		344	200	greeting guests, support services, check in, retail sales
Cafe + Community Work*	1		544	504	simple, fine food & drink concessions
Kitchen + Community Gather*	1		676	1000	gathering, eating, socializing, demos
Interactive Art	1	–	605	-	interactive public art / artist demos, large group meeting space (with gallery)
Gallery + Artist-in-residency	1		903	400/400	display of art, artist-in-residence, demos, large group meetings
Community Work*	1		647	1512	collaborative work, reading, sketching,
Library & Casual Meeting Space	1		447	400/723	reference materials, inspiration, reading, sketching, small quiet meetings
Cozy Huddle Space	2	4-6	448	463	small private meetings. focused quiet work
Phone Corners	4	1 or 2	197	320	private conversation
Kids Area	1		206	-	secure, playing
Community Connect	1		223	100/72	traveler zone, events and info in airport, leave & take books, print/copy/fax
Bag Storage	60	–	240	150	check personal belongings
Restroom	2	–	407	400	W: 2 WC; M: 2 urinals, 1 WC
Storage	2	–	100	150	
<b>TOTAL</b>			<b>5987</b>		
<i>Additional Spaces integrated:</i>					
Kids Area (Secure)					
Retail Goods					
Coffee/Food Concession					
Lending Library					
<i>Combined Spaces:</i>					
Gallery	1	–	400		display of art
Casual Meeting Space	5	4	723		reading sketching play
Print Copy Area	1	–	72		
Community Area Bulletin Board	1	–	100		display what's going on in airport
Coat Closet	1	–	60		



# T2 | PROGRAM

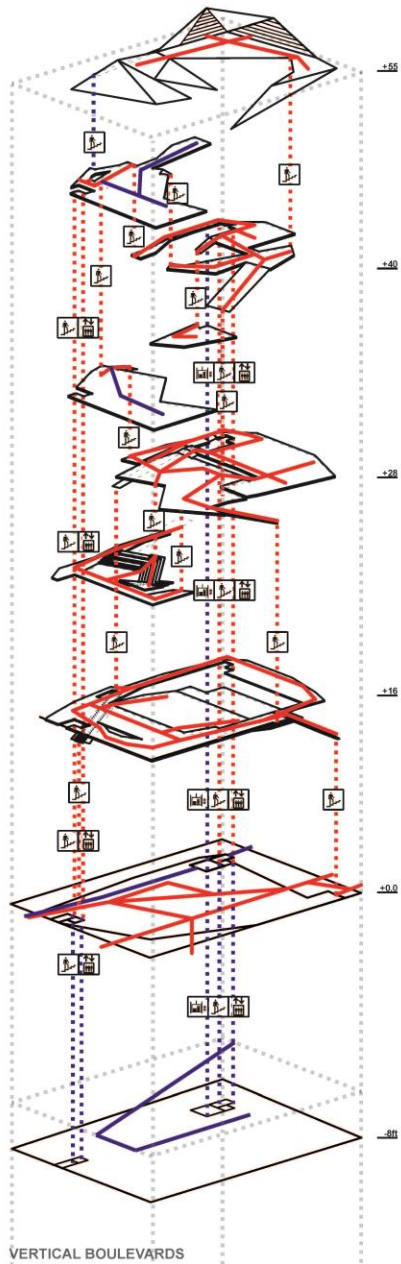
Total Area: 6,170 USF

Total Seats: 77

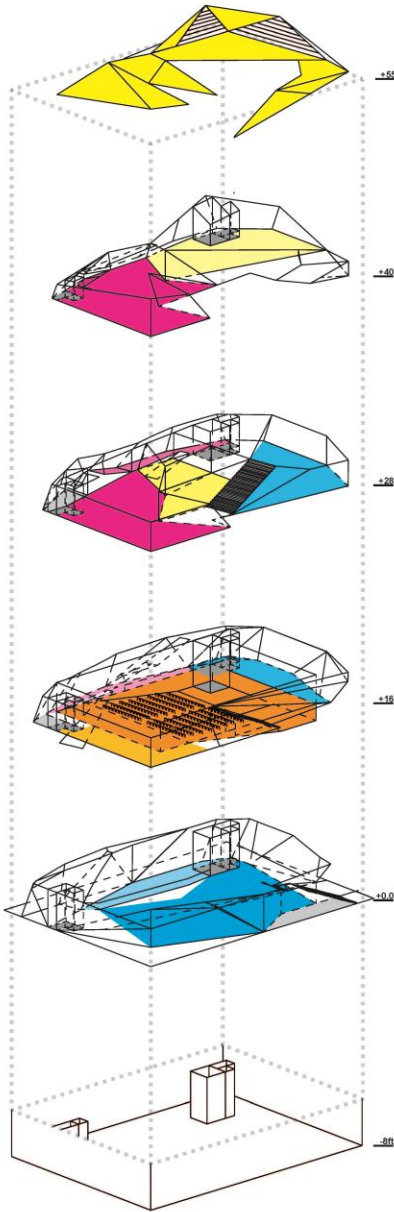
Space Type	Qty	# of Seats	Area
Reception/Entry	1	2	300
Kitchen/Café	1	20	500
Workshop Space	2	10	500
Group Work area	2	40	800
Focused work zone	8	6	300
Library/casual meeting space	1	5	200
Lounge/Casual Meeting Space	2	10	500
Cozy Huddle Space	3	6	800
Phone corners	5	15	400
Lockers/closet/storage	10		200
Restrooms	2		400
Print/Copy Area	1 na		100
Community Area/Bulletin Board/Gallery	1		1000
Storage			200
<b>TOTAL AREA</b>			<b>6200</b>

CIRCULATION

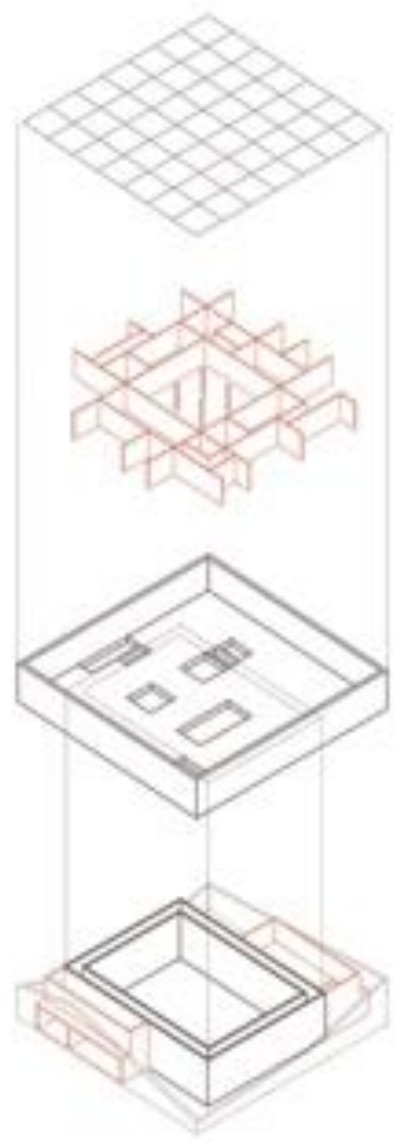
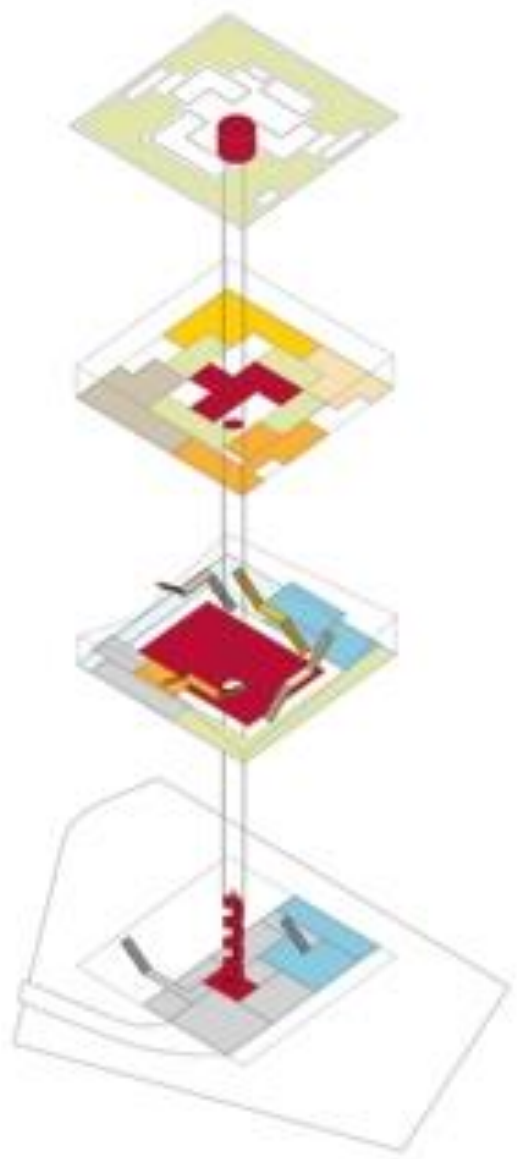
- PUBLIC LEVEL-CIRCULATION —
- NON-PUBLIC LEVEL-CIRCULATION —
- PUBLIC VERTICAL-CIRCULATION ⋯
- NON-PUBLIC VERTICAL-CIRCULATION ⋯

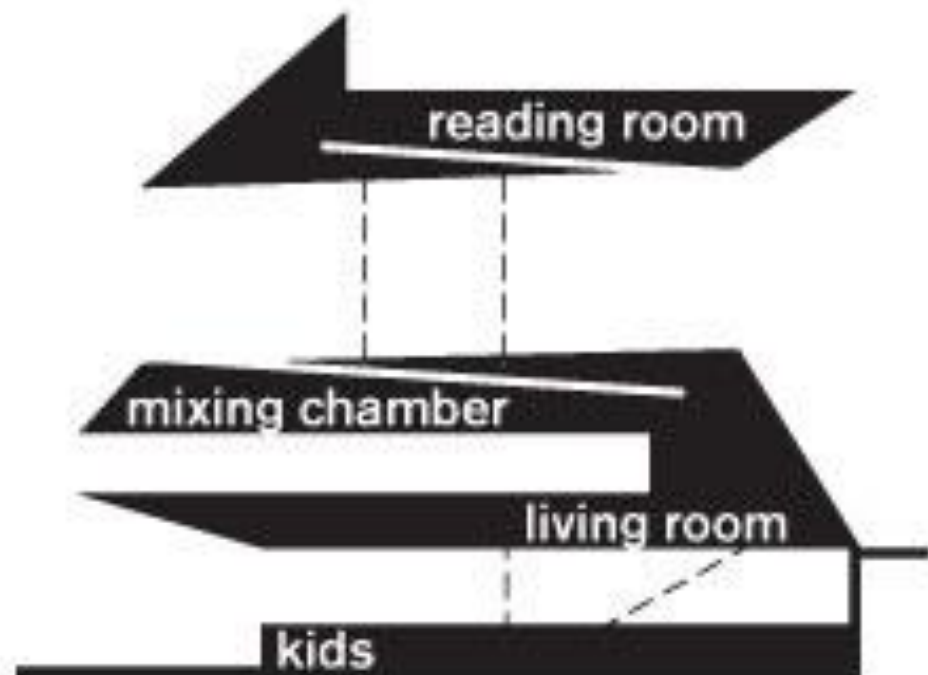


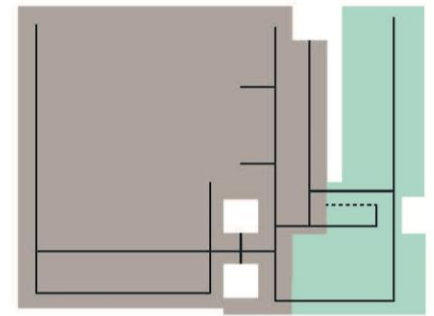
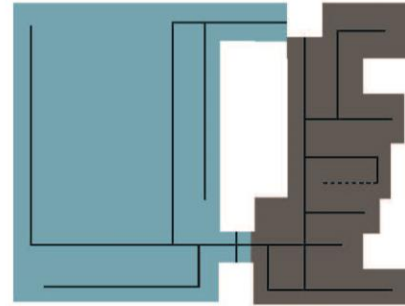
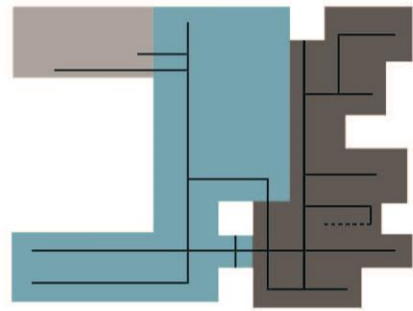
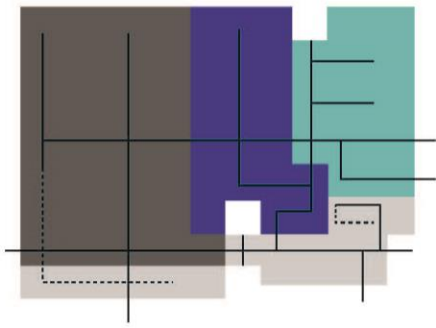
PROGRAM



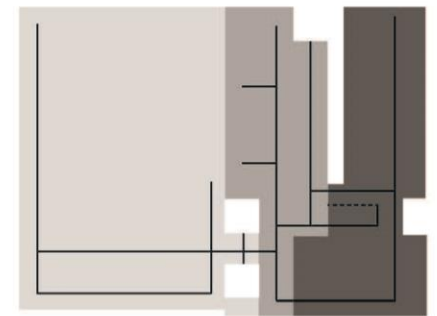
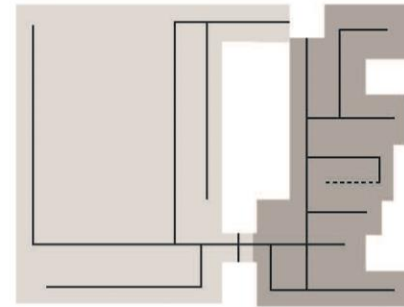
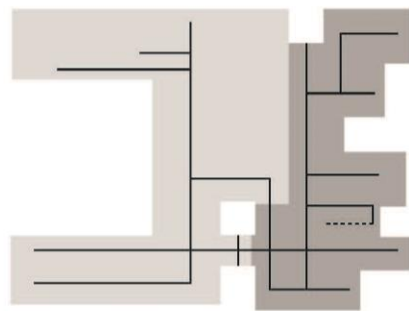
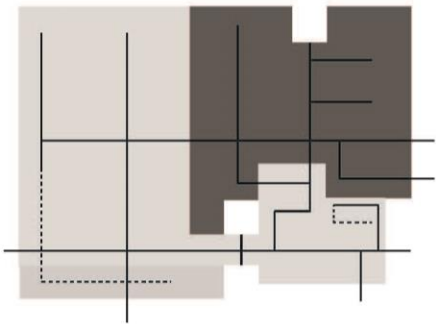
- Teaching/Research Gardens 3000ft<sup>2</sup>
- Local 'Good Food' Organizations 1200ft<sup>2</sup>
- Classrooms 800ft<sup>2</sup>
- Research Institute 2000ft<sup>2</sup>
- Greenhouse/Hydroponics Lab 800ft<sup>2</sup>
- Outdoor Terrace 400ft<sup>2</sup>
- Auditorium 4800ft<sup>2</sup>
- Gallery/Reception/Exhibition 2000ft<sup>2</sup>
- Food Hall 4000ft<sup>2</sup>
- Commissary Kitchens 2200ft<sup>2</sup>
- Food Bank 2100ft<sup>2</sup>
- Secured Loading Dock 600ft<sup>2</sup>
- Building Services 400ft<sup>2</sup>
- Public Bathrooms 1200ft<sup>2</sup>





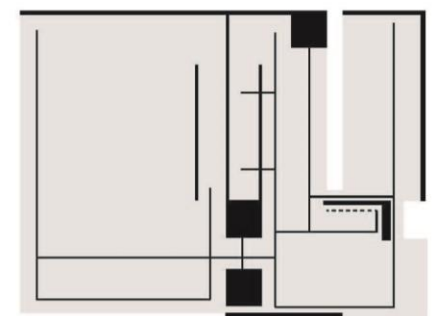
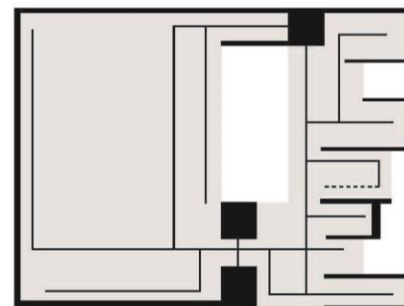
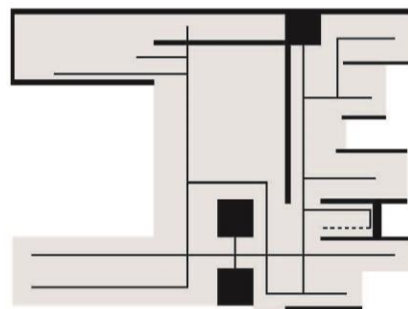
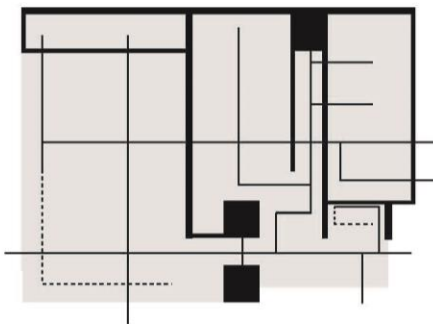


PROGRAM AND CIRCULATION

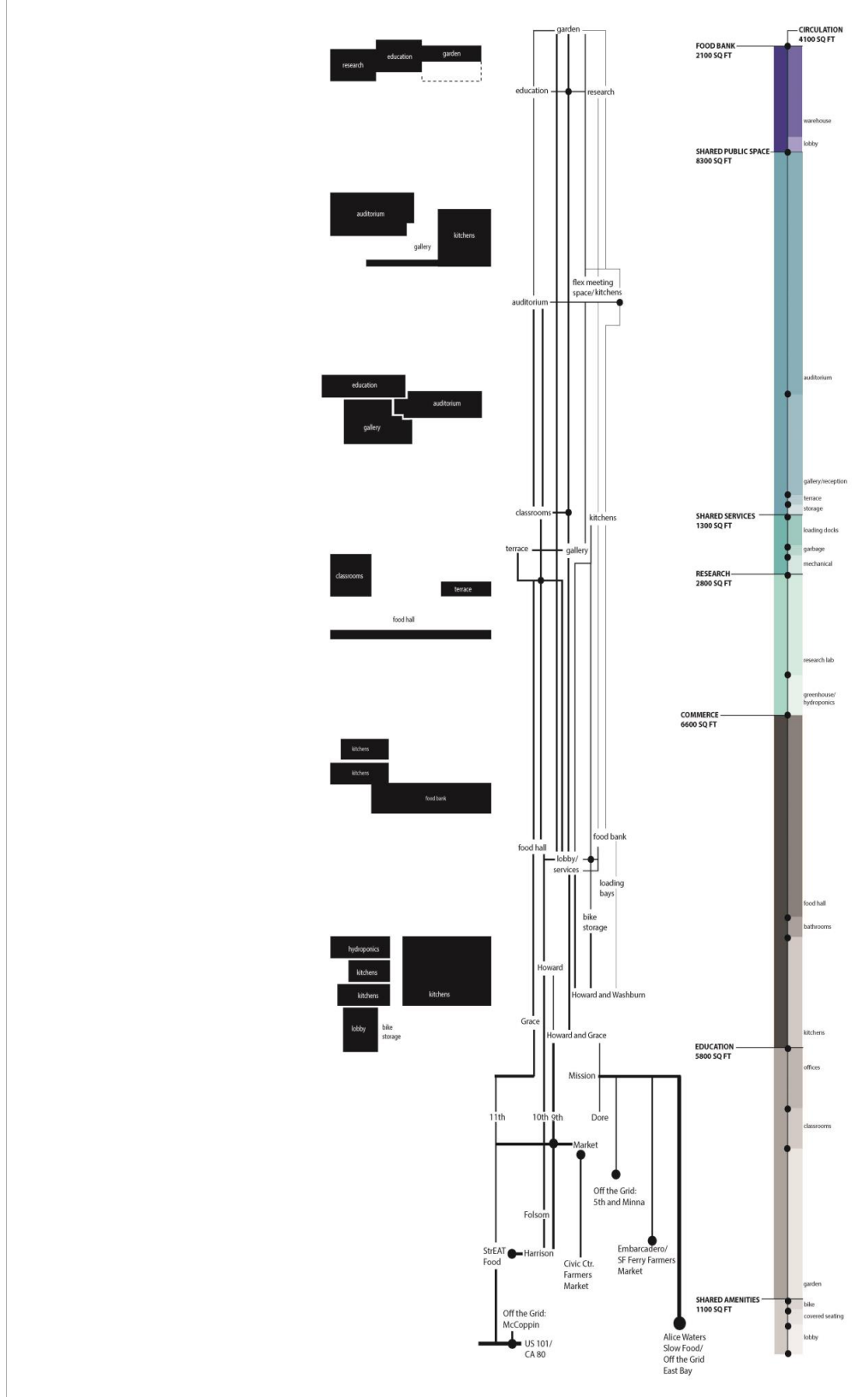
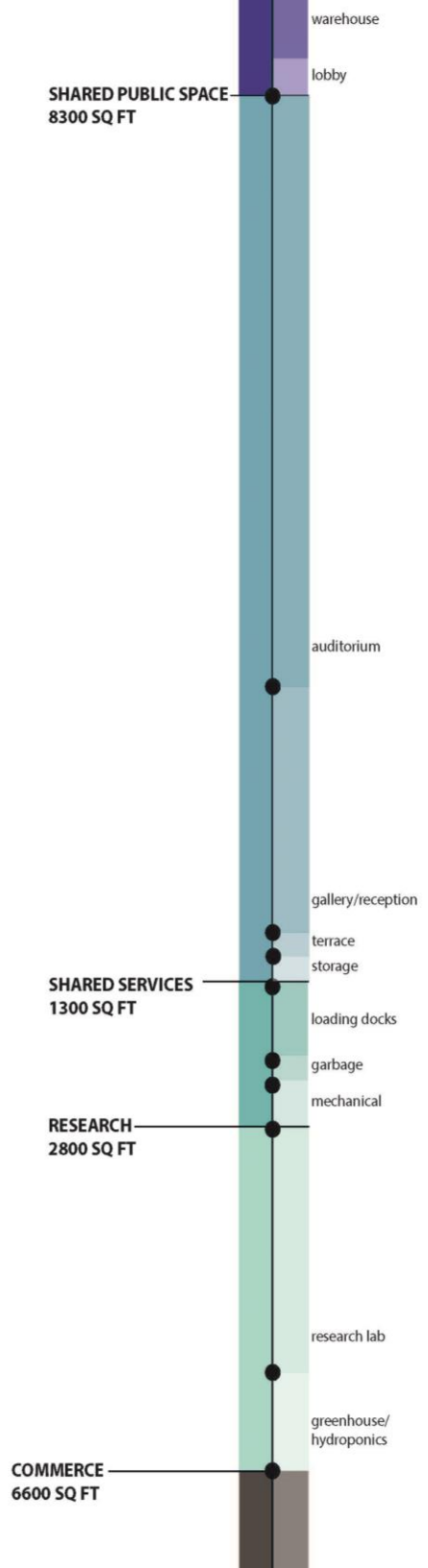


— circulation    light grey public    medium grey semi    dark grey private

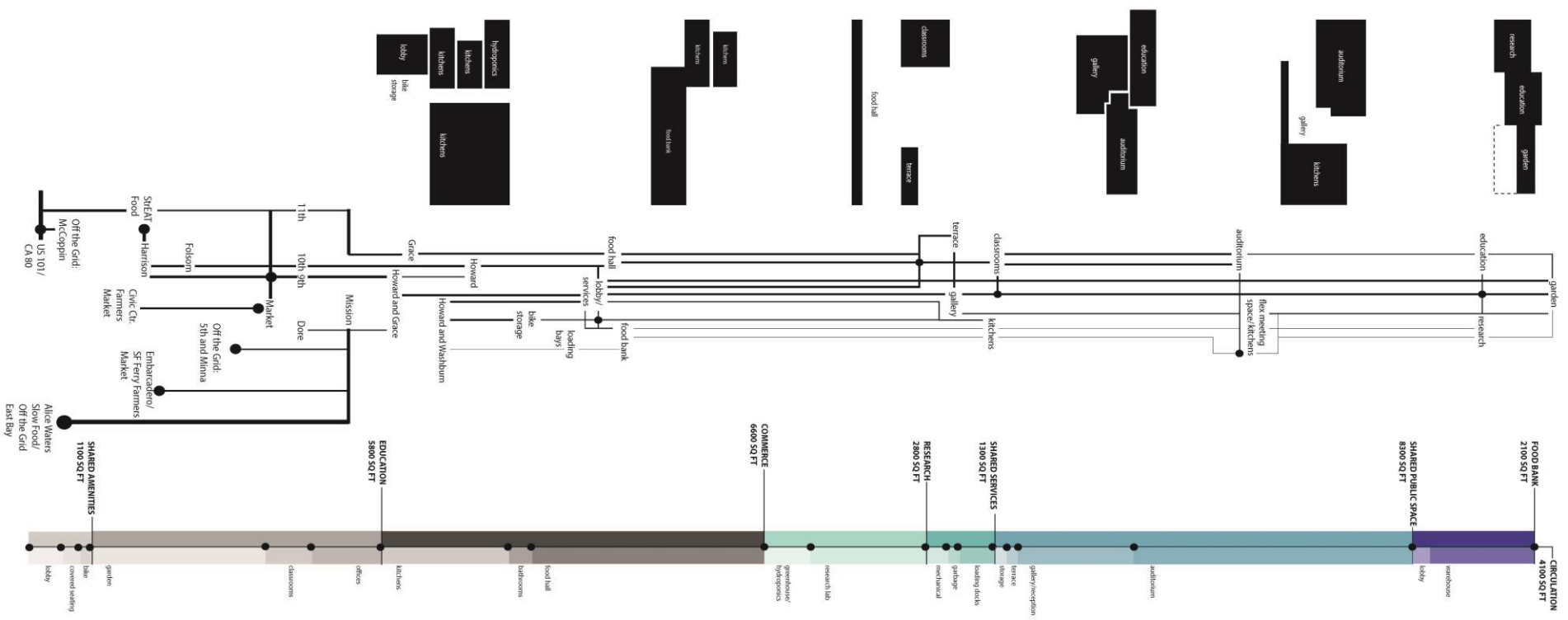
PUBLIC/ PRIVATE AND CIRCULATION



CIRCULATION AND VISUAL POROSITY







CIRCULATION

FOOD BANK  
2100 SQ FT

SHARED PUBLIC SPACE  
8300 SQ FT

RESEARCH  
2800 SQ FT

SHARED SERVICES  
1300 SQ FT

COMMERCE  
6600 SQ FT

EDUCATION  
5800 SQ FT

SHARED AMENITIES  
1100 SQ FT

US 101/  
CA 90

East Bay

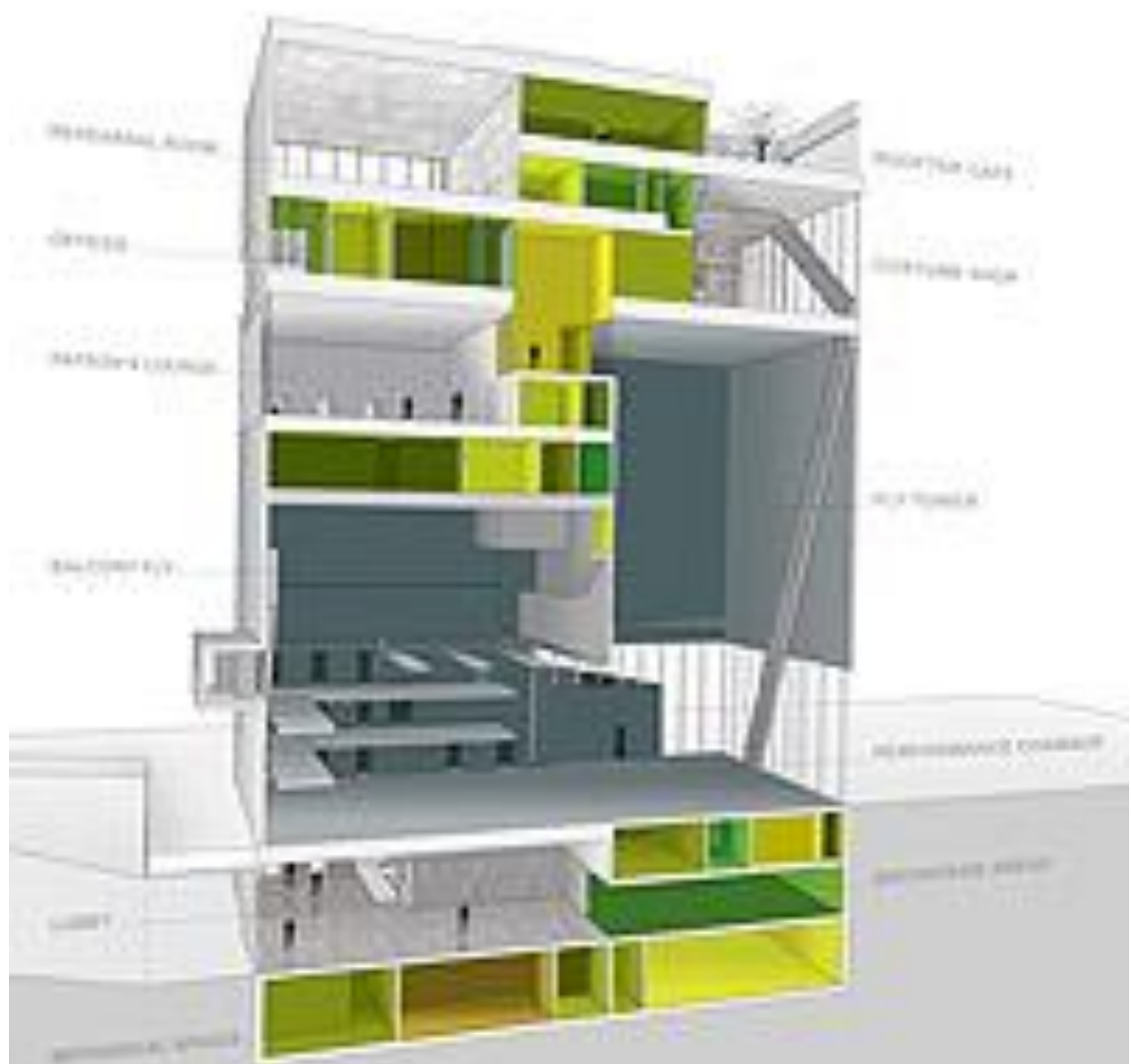
11th

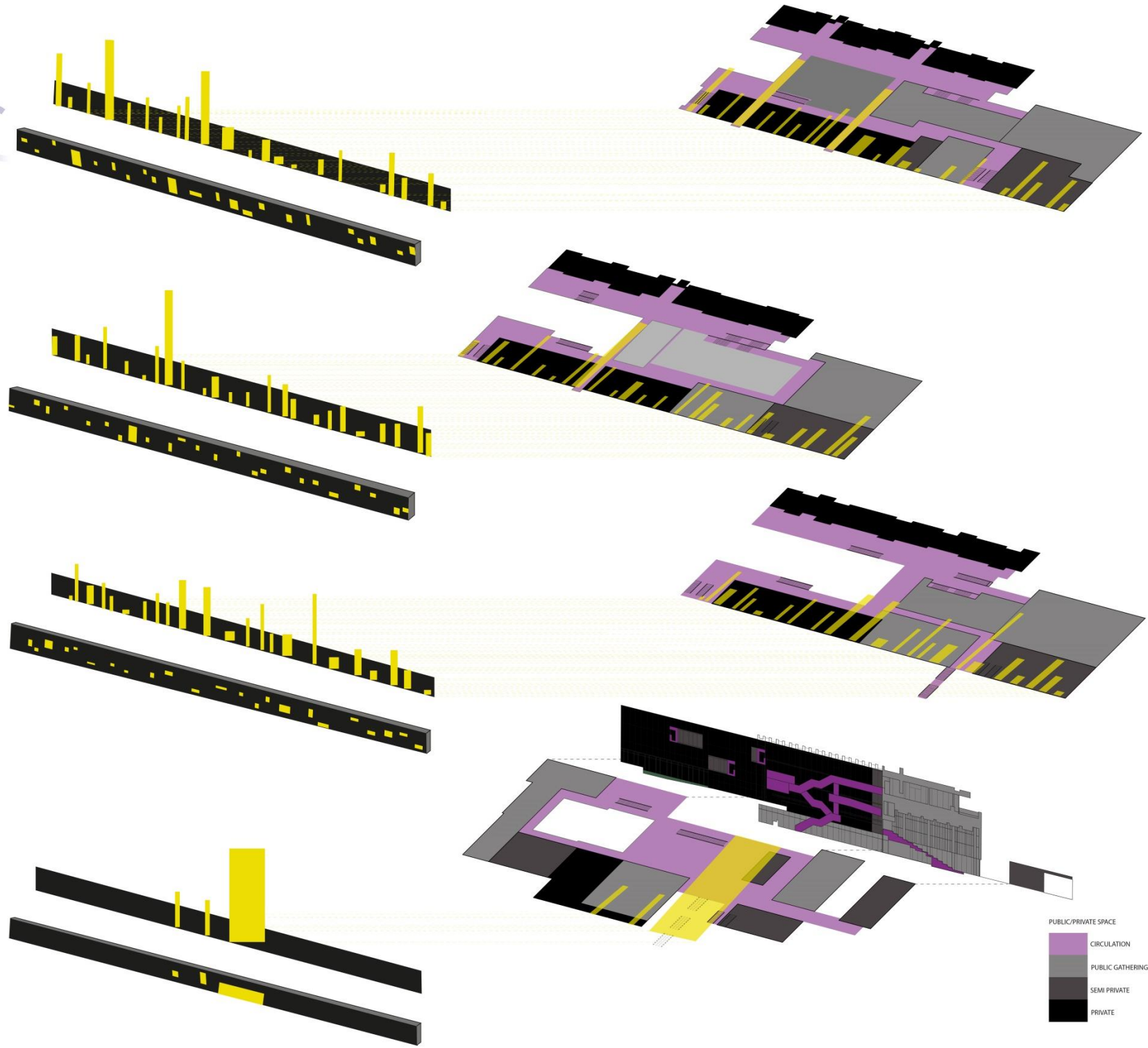
10th 9th

8th

US 101/  
CA 90

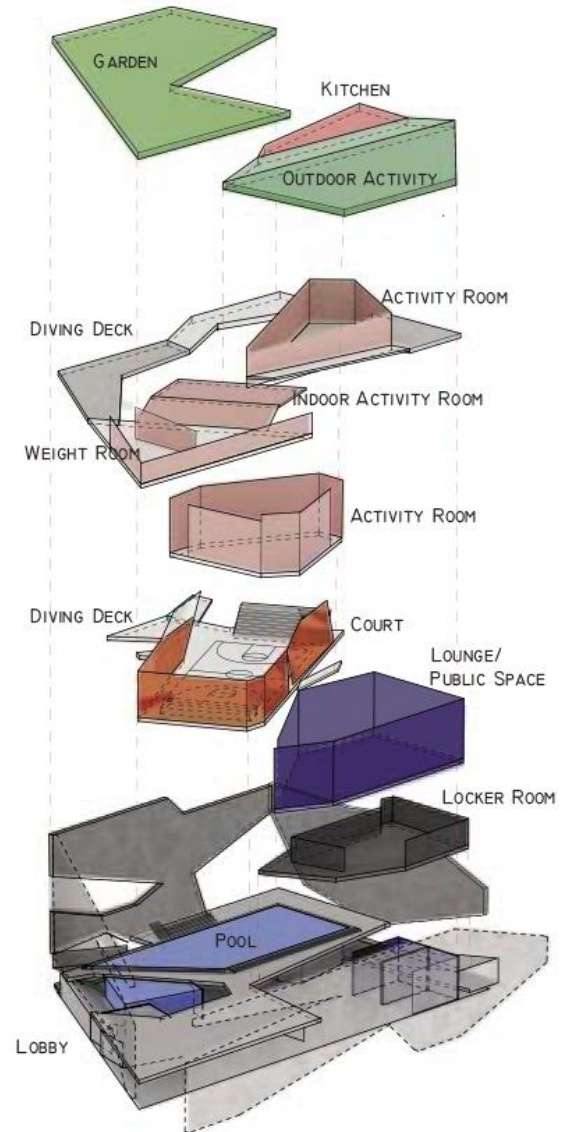
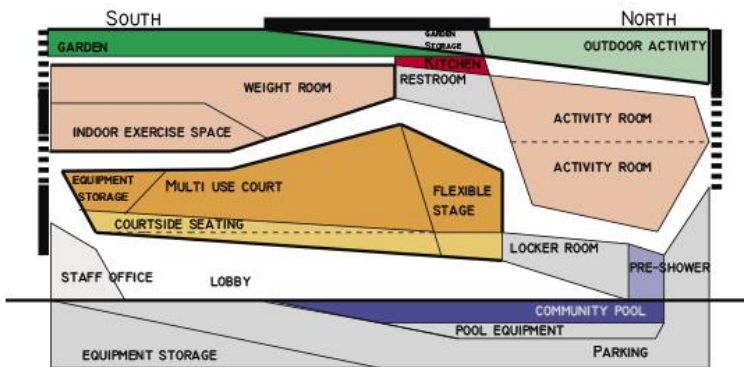
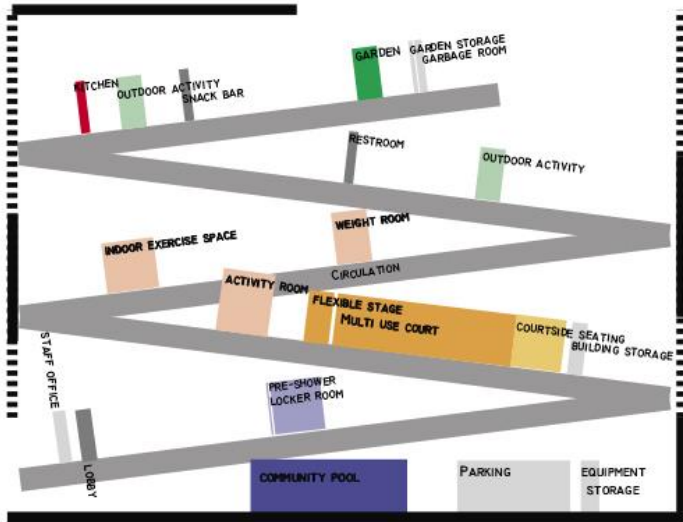
East Bay



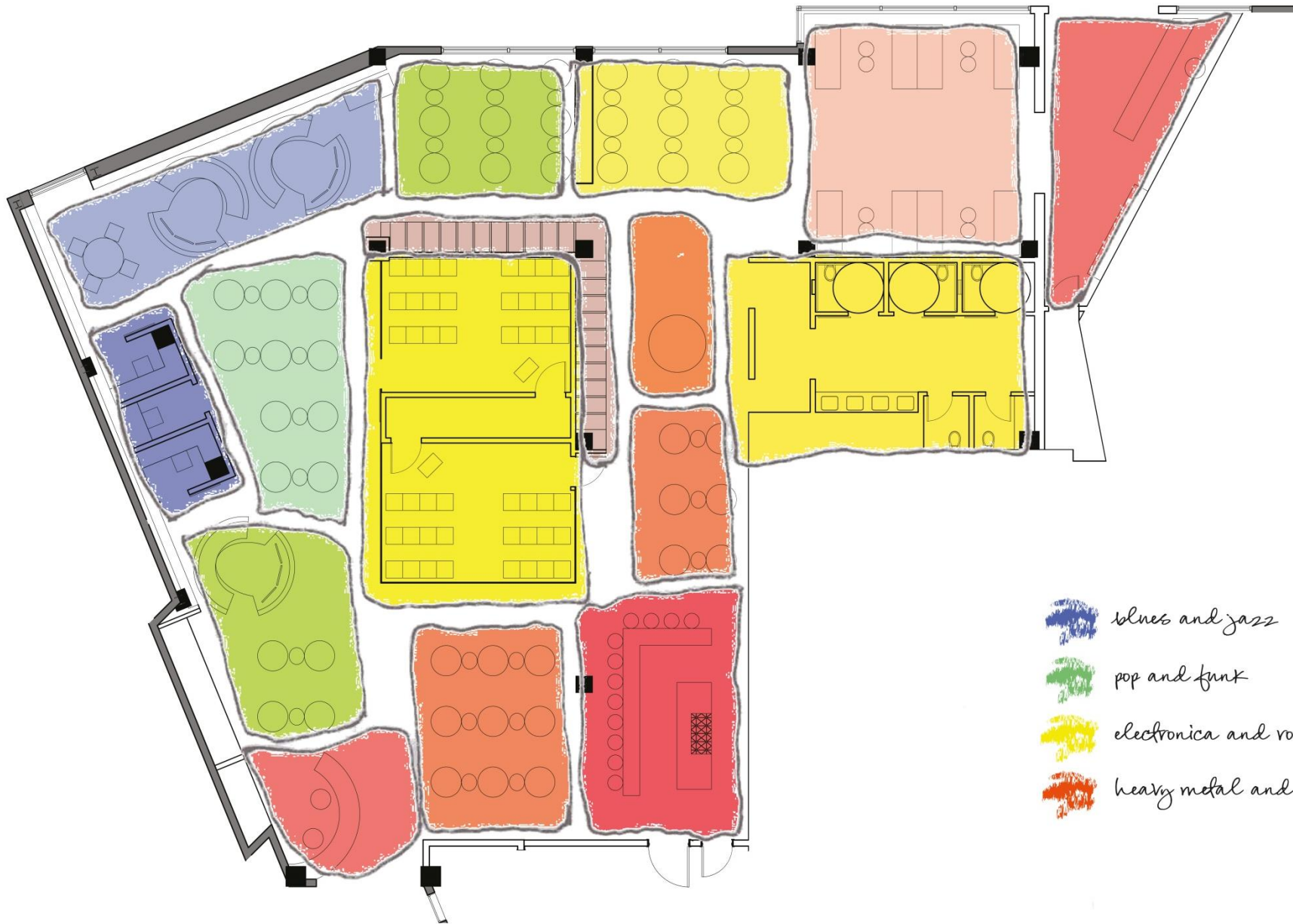






PUBLIC/PRIVATE SPACE

- CIRCULATION
- PUBLIC GATHERING
- SEMI PRIVATE
- PRIVATE



EXPLODED AXON



-  blues and jazz
-  pop and funk
-  electronica and rock n' roll
-  heavy metal and grunge

## REFERENCES

- ❑ John Heskett (2005) , Design: A Very Short Introduction , ISBN-13: 978-0192854469
- ❑ [waag.org/sites/waag/files/public/media/publicaties/design\\_thinking\\_process\\_guide-by-nc](http://waag.org/sites/waag/files/public/media/publicaties/design_thinking_process_guide-by-nc)
- ❑ Kenneth Bordens, Bruce Barrington Abbott, Research Design and Methods: A Process Approach (2013), ISBN: 0078035457
- ❑ Design Thinking: process and methods manual by Robert A. Curedale
- ❑ [smallbusiness.chron.com/design-concept-statement-3544.html](http://smallbusiness.chron.com/design-concept-statement-3544.html)
- ❑ [Dehubpages.com/hub/How-to-Write-an-Interior-Design-Concept-Statement](http://Dehubpages.com/hub/How-to-Write-an-Interior-Design-Concept-Statement)
- ❑ Shaping Interior Space 2nd Ed. August 21, 2007, by Roberto J. Rengel (Author), ISBN-13: 978-1563675188
- ❑ [www.rrcc.edu](http://www.rrcc.edu)
- ❑ [www1.inetba.com/srbassociates/spacepl.ivnu](http://www1.inetba.com/srbassociates/spacepl.ivnu)
- ❑ [expert.cc.purdue.edu/~wishmeie/sketches.htm](http://expert.cc.purdue.edu/~wishmeie/sketches.htm)
- ❑ [openlab.citytech.cuny.edu/arch3610-fall-2013/assignments/assignment-8-list-of-spaces-matrix-bubble-diagram/](http://openlab.citytech.cuny.edu/arch3610-fall-2013/assignments/assignment-8-list-of-spaces-matrix-bubble-diagram/)
- ❑ [openlab.citytech.cuny.edu/arch3510design-v-sp14/2014/02/18/adjacencybubble-diagrams-revision/](http://openlab.citytech.cuny.edu/arch3510design-v-sp14/2014/02/18/adjacencybubble-diagrams-revision/)
- ❑ [archtechstudent.weebly.com/bubble-diagrams.html](http://archtechstudent.weebly.com/bubble-diagrams.html)